



Endodontics in the 3rd Dimension

Mastering Clinical Practice

Dr Bobby Patel BDS, MFDS RCS (ED) MCLinDent (ENDO) (Dist)
MRD RCS (ENG) MRACDS (ENDO)

8

CPD HOURS

COURSE OUTLINE

This one day hands on seminar offers high training for general dentists wishing to pursue excellence in endodontics.

The course will teach state-of-the-art evidence-based procedures related to diagnosis, pathology, treatment planning, root canal preparation and obturation.

A focus on recent advances using cone beam CT and materials will be presented throughout using clinical case examples. Techniques for avoiding and managing endodontic procedural errors will also be analysed in detail.

COURSE TOPICS

- Endodontic diagnosis and treatment planning including CBCT
- Use of irrigants and the role of ultrasonic activation (lecture/hands-on)
- Optimise working length determination using radiographs, paper points and electronic apex locators
- Prevention and management of procedural complications such as canal transportation, loss of length, procedural perforation and instrument fracture
- Mineral Trioxide Aggregate (MTA) and Biodentine in endodontic obturation, perforation repair and surgical endodontics
- Principles of modern endodontic surgery with demonstrations of ultrasonic retropreparation and retrofilling
- Single vs multi-visit endodontics - evidence based concepts & practical considerations
- How to best prepare root canals and the concept of rotary Ni-Ti instrumentation (lecture/hands-on)

LEARNING OBJECTIVES

- How to accurately diagnose and treatment plan endodontic cases
- Advances in radiographic techniques including CBCT
- Core knowledge and practical aspects of canal preparation with rotary NiTi, including glide path relevance
- Working length determination and the use of apex locators
- Modern concepts of root canal obturation
- How to avoid or deal with procedural complications
- Indications and principles of endodontic surgery including intentional re-implantation

DR BOBBY PATEL

Dr Bobby Patel graduated from Bart's and the London Medical and Dental School in 1999 and worked as a dentist in general practice. In 2006 he completed his endodontic training at the Eastman Dental Institute graduating with distinction. He was subsequently awarded Membership in Restorative Dentistry (MRD) the highest formal qualification available for the endodontic mono-specialty by the Royal College of Surgeons of England, and entered onto the General Dental Council's Specialist List for Endodontics. In 2007 Dr Patel moved to Australia to work in specialist referral practice and was later awarded membership of the Royal Australian College of Dental Surgeons (Endodontics). In 2016 he authored two practical endodontic textbooks with Springer Publishing, Germany.

WHAT TO BRING

Participants are asked to bring their own loupes and extracted teeth with access cavities prepared

VENUE
Canberra
East Hotel
69 Canberra Ave
Kingston ACT 2604

DATES
Fri 7 June 2019
Fri 13 Sept 2019

TIME
Registration
8.30AM

Start
9.00AM

Finish
5.00PM

COST
\$448 | Early bird
\$548 | Full price

*Register 4 weeks before the course date to receive the Early Bird price. All prices include GST.

CONTACT
T: 1300 302 421
E: events@henryschein.com.au

Register online at
henryschein.com.au/education



Supported by
COLTENE


MORITA

 **HENRY SCHEIN®**

Rely on Us™



Enhanced Endodontics

Technologic advancements practically applied for better endodontic outcomes

Dr Geoffrey Young

Doctor of Clinical Dentistry (Endodontics)

7
CPD HOURS

VENUE

Brisbane

Henry Schein
8 Gardner Close
Milton QLD 4064

DATE

Fri 6 September 2019

TIME

Registration
8.30AM

Start

9.00AM

Finish

5.00PM

COST

\$448 | Early bird

\$548 | Full price

*Register 4 weeks before the course date to receive the Early Bird price. All prices include GST.

COURSE OUTLINE

Contemporary endodontics has seen unprecedented advances in diagnostic imaging, instruments, and materials. This course will show participants how to effectively integrate important technologic advancements into daily practice to improve endodontic treatment outcomes. Advances in endodontic imaging, instrumentation, root canal disinfection, root canal filling, and materials will be discussed.

COURSE TOPICS

- The role of high-resolution CBCT (3D) imaging in endodontic diagnosis and treatment planning: A new standard of care
- Modern paradigms in endodontic access and directed dentine conservation
- Advanced NiTi file systems: how to get best use of controlled memory (CM) NiTi rotary files for superior clinical results (hands-on)
- Strategies to enhance endodontic irrigation to achieve more thorough disinfection of complex root canal anatomy
- How to consistently produce high quality root fillings using thermoplastic obturation techniques (hands-on)
- Calcium silicate based materials (MTA and bioceramics) in endodontic obturation, perforation repair, and vital pulp therapy

LEARNING OBJECTIVES

- Apply CBCT (3D) imaging to facilitate endodontic diagnosis and treatment
- Understand the principles of dentine conservation in modern endodontics and how this can enhance long-term tooth survival
- Understand the advantages, principles, and practical aspects of controlled memory (CM) NiTi files systems
- Apply strategies and techniques to enhance endodontic irrigation and obturation
- Understand the applications of MTA and bioceramics in modern endodontics

WHAT TO BRING

Participants are asked to bring their own loupes and extracted teeth with access cavities prepared

DR GEOFFREY YOUNG

Dr Young obtained his BDS (University Medal) from The University of Sydney in 2002, and his specialist degree from The University of Melbourne in 2007. He went on to establish Sydney Endodontic Centre - an accredited specialist endodontic group practice in Sydney.

Dr Young was the first endodontist in New South Wales awarded fellowship of the RACDS in the special field of endodontics, and is a current examiner for the FRACDS (GDP) final examination. Dr Young has been committed to clinical teaching at The University of Sydney for over 10 years, as well as developing and providing continuing education through the ADA and RACDS. He is past President of the Australian Society of Endontology (NSW), as well as a member of the Australian & New Zealand Academy of Endodontics, the International Association of Dental Traumatology, and the American Association of Endodontists.

CONTACT

T: 1300 302 421

E: events@henryschein.com.au

Register online at

henryschein.com.au/education



Supported by

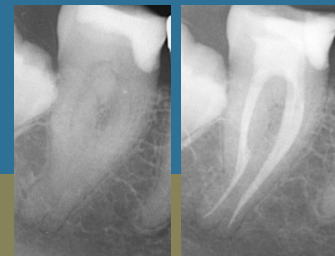




The A to Z of Root Canal Treatment

Safely, reproducibly and effectively

Dr Humza Ahmed
Specialist Endodontist



7

CPD HOURS

VENUE

Melbourne
Henry Schein
Level 9
369 Royal Parade
Parkville 3052 VIC

DATE

Fri 4 October 2019

TIME

Registration
8.30AM

Start
9.00AM

Finish
5.00PM

COST

\$448 | Early bird
\$548 | Full price

*Register 4 weeks before the course date to receive the Early Bird price. All prices include GST.

COURSE OUTLINE

Root canal treatment has had numerous advancements over the past decade. This course will highlight contemporary methods that can be used in clinical practice to improve endodontic outcomes. Emphasis will be on establishing a correct diagnosis, the integration of rotary nickel titanium (NiTi) instrumentation and the use of modern obturation methods. Participants will have the opportunity to implement the techniques learned in the hands-on component of the course and will gain a comprehensive understanding of contemporary root canal treatment with the aid of modern instrumentation.

COURSE TOPICS

- Patient examination and radiographic imaging including the use of cone beam computed tomography CBCT in endodontics
- Diagnostic terminology and treatment planning
- Endodontic access with an understanding of the complexity of root canal morphology
- Modern approaches to dentine conservation
- Location and management of difficult to find canals, including calcified canals
- Step-by-step guide to achieving efficient mechanical preparation of the root canal system using rotary NiTi instrumentation
- Advanced techniques to achieving enhanced irrigation
- 3D root canal obturation
- Current evidence on the outcomes of root canal treatment including single vs multiple visit treatment

PARTICIPANTS WILL BE ABLE TO

- Use the appropriate diagnostic tests
- Understand and utilise CBCT for diagnosis and treatment planning
- Appreciate how root canal morphology influences endodontic access design
- Understand the principles of locating and negotiating calcified canals
- More effectively locate MB2 canals
- Recognise the benefits of rotary NiTi instrumentation and how it can be utilised for effective mechanical preparation of root canals
- Appreciate the complexity of treatment of teeth with open apices
- Understand the techniques used to enhance the efficacy of irrigants
- Perform cold and warm root canal obturation techniques

WHAT TO BRING

Participants are asked to bring their own loupes and two extracted teeth with access cavities prepared

DR HUMZA AHMED

Dr Humza Ahmed is a registered specialist endodontist. He completed his dental qualifications at Griffith University in Queensland, receiving numerous academic excellence awards. Humza received a scholarship for his Doctor of Clinical Dentistry (Endodontics) achieved in 2017 at the University of Otago, New Zealand. He graduated with membership in Specialist Dental Practice with the Royal Australasian College of Dental Surgeons and has been a clinical supervisor and examiner of undergraduate dental students. He currently works in private practice in Sydney.

CONTACT

T: 1300 302 421
E: events@henryschein.com.au

Register online at
henryschein.com.au/education

Supported by

 **COLTENE**


MORITA

 **HENRY SCHEIN®**

 **Rely on Us™**



Achieving Endodontic Success

Practical skills to improve your endodontics



Dr Jeff Ward

BDS, MDSc, GradDipClinDent, MRACDS(Endo), FPFA

7

CPD HOURS

VENUE

Melbourne
Henry Schein
Level 9
369 Royal Pde
Parkville Vic 3052

DATE

Fri 21 June 2019

TIME

Registration
8.30AM

Start
9.00AM

Finish
5.00PM

COST

\$448 | Early bird
\$548 | Full price

*Register 4 weeks before the course date to receive the Early Bird price. All prices include GST.

COURSE OUTLINE

Modern endodontic treatment has many technological advances that all help in achieving excellent success rates. Jeff's presentation and hands-on workshop will demonstrate the importance of CBCT imaging, enhanced magnification and illumination, root canal irrigation and will discuss new metallurgy and techniques in rotary instrumentation for achieving predictable endodontic success.

COURSE TOPICS

- The importance of a correct diagnosis and the use of clinical tests and contemporary imaging techniques such as high volume, low field of view CBCT scans
- Conservative access preparations and dentine preservation
- The latest rotary NiTi technology and innovation
- Strategies to consistently achieve accuracy with electronic apex locators
- How to achieve optimal disinfection of the root canal system
- Obturation techniques to achieve predictability and consistency

DR JEFF WARD

Jeff has worked in specialist endodontic practice in Melbourne since 2002. Jeff also teaches clinical endodontics at the Melbourne Dental School and he lectures on various endodontic topics for universities throughout Australia, Asia and New Zealand. Jeff has a special interest in rotary NiTi instruments, the removal of fractured endodontic instruments and the use of operative microscopes in endodontics.

LEARNING OBJECTIVES

- Diagnosis and treatment planning using the appropriate principles, tests and modern technology
- Understanding conservative access design using magnification and imaging
- Locating difficult anatomy e.g. MB2 canals, bifurcating canals
- Understand the evolution of rotary NiTi instruments and endodontic motor design to understand which instruments best suit which cases
- Appreciate the importance of irrigation and how to maximise its effect
- Use modern techniques to achieve predictable obturation

WHAT TO BRING

Participants are asked to bring their own loupes and extracted teeth with access cavities prepared



CONTACT

T: 1300 302 421

E: events@henryschein.com.au

Register online at

henryschein.com.au/education



Supported by

 **COLTENE**


MORITA

 **HENRY SCHEIN®**

 **Rely on Us™**

Advanced Endodontic Workshop

Hands-on Workshop for Simple to Moderately Challenging Endodontic Cases

Dr Shalin Desai

BDS, Grad Dip PH, D Clin Dent - Endodontics



7

CPD HOURS

VENUES

Brisbane

Henry Schein
Ground Floor
8 Gardner Close
Milton 4064 QLD

Sydney

Henry Schein
Building 3
Level 6
189 O'Riordan St
Mascot 2020 NSW

DATE

Brisbane

Fri 16 Aug 2019

Sydney

Fri 30 Aug 2019

TIME

Registration

8.30AM

Start

9.00AM

Finish

5.00PM

COST

\$448 | Early bird

\$548 | Full price

*Register 4 weeks before the course date to receive the Early Bird price. All prices include GST.

COURSE OUTLINE

The objective of this lecture and hands-on course is to equip clinicians with the skills required to perform simple to moderately challenging endodontic cases and enable them to identify and minimise potential complications.

This programme will be limited to a small group to ensure open communication and a personalised experience for all participants. Dr Desai will be sharing useful tips and tricks for endodontic assessment, diagnosis and treatment procedures.

This hands-on workshop is an opportunity for dentists to improve their skills in diagnosis, case selection, root canal location and canal shaping. Current obturation techniques using the latest equipment will also be practised. Clinicians will work with extracted teeth to facilitate smooth skill transition into their clinic.

On completion of this course participants will be better equipped to manage endodontic challenges faced in day-to-day practice.

DR SHALIN DESAI

Dr Shalin Desai completed his Doctor of Clinical Dentistry, specialising in endodontics at the University of Otago. Prior to specialisation, Shalin practiced general dentistry in private and public clinics.

Shalin runs a specialist practice in Bella Vista, Sydney and holds an honorary educator position with The University of Sydney. He enjoys sharing his clinical knowledge with dental students and GP dentists via continuing education events.

Shalin has published several scientific papers in international journals and is passionate about providing the highest quality evidence-based endodontic treatments.

LEARNING OBJECTIVES

- Diagnosis and case selection in endodontics, including understanding the use of advanced investigative tools like CBCT
- Locating root canals - including difficult to locate orifices (MB2, second distal or lingual canal) - basic science, clinical applications and hands-on workshop
- Perfecting apex location using electronic apex locators
- Identifying and avoiding potential complications during root canal shaping
- Various uses of ultrasonic endodontic tools
- Use of Hyflex EDM/NiTi-CM state-of-the-art file system for root canal shaping
- Use of modern vertical compaction technique for obturation

WHAT TO BRING

Participants are asked to bring their own loupes and extracted teeth with access cavities prepared

CONTACT

T: 1300 302 421

E: events@henryschein.com.au

Register online at

henryschein.com.au/education



Supported by



Evolution of Endodontics

Rotary NiTi, Motors & Medicaments

Dr Jeff Ward

BDS, MDSc, GradDipClinDent, MRACDS(Endo), FPFA



3

CPD HOURS

VENUE

Melbourne
Henry Schein
Level 9
369 Royal Pde
Parkville Vic 3052

DATE

Wed 7 August 2019

TIME

Registration
5.30AM

Start
6.00PM

Finish
9.00PM

COST

\$78
All prices include GST.

COURSE OUTLINE

Endodontic treatment has evolved at an exponential rate over the last two decades. Rotary NiTi instruments have been in regular use for over 20 years and their shape, size and metallurgy has changed considerably, all with the aim of increasing endodontic success.

Modern endodontic motors have developed just as dramatically with integrated torque controls, apex locators, and safety aids all now commonplace.

Medicaments are still just as essential as ever to endodontic disinfection and this course will also outline the optimal rationale for antibacterial control of the root canal system.

COURSE TOPICS

- The latest in rotary NiTi and endodontic motor technology and innovation
- How modern endodontic preparation can be achieved through conservative access preparations and how to preserve dentine
- Strategies to consistently achieve accuracy with electronic apex locators
- How to achieve the optimal disinfection of the root canal system

LEARNING OBJECTIVES

- Understand the evolution of rotary NiTi instruments and endodontic motor design to understand which instruments best suit which cases
- Understanding conservative access and preparation design using magnification and imaging
- Appreciate the importance of irrigation and how to maximise its effects

DR JEFF WARD

Jeff has worked in specialist endodontic practice in Melbourne since 2002. Jeff also teaches clinical endodontics at the Melbourne Dental School and he lectures on various endodontic topics for universities throughout Australia, Asia and New Zealand. Jeff has a special interest in rotary NiTi instruments, the removal of fractured endodontic instruments and the use of operative microscopes in endodontics.



CONTACT

T: 1300 302 421
E: events@henryschein.com.au

Register online at
henryschein.com.au/education



Supported by
COLTENE


MORITA

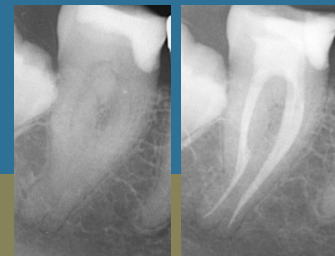
 **HENRY SCHEIN®**

Rely on Us™



Root Canal Preparation & Obturation Past, Present & Future

Dr Humza Ahmed
Specialist Endodontist



3

CPD HOURS

VENUE

Sydney
Henry Schein
Building 3
Level 6
189 O'Riordan St
Mascot NSW 2020

DATE

Wed 10 July 2019

TIME

Registration
5.30PM

Start
6.00PM

Finish
9.00PM

COST

\$78
Prices include GST.

COURSE OUTLINE

Rotary Nickel-Titanium (NiTi) has had numerous technological advancements since it was introduced in the early 1990s. This course will highlight the past, present and future of rotary NiTi technology as well as modern obturation methods used during root canal treatment. Participants will have the opportunity to sample contemporary rotary NiTi instruments and obturation equipment.

COURSE TOPICS

- What is heat treatment of NiTi and why is metallurgy important for root canal obturation?
- Technological advances of rotary NiTi and how it is incorporated into everyday root canal procedures
- A step by step guide to achieving efficient mechanical preparation of the root canal system using HyFlex rotary NiTi instrumentation
- Three dimensional root canal obturation

LEARNING OBJECTIVES

- Understand how treatment of rotary NiTi files can be utilised to enhance the properties of instruments
- Recognise the benefits of rotary NiTi instrumentation and how it can be utilised for effective mechanical preparation of root canals
- Perform cold and warm root canal obturation techniques



DR HUMZA AHMED

Dr Humza Ahmed is a registered specialist endodontist. He completed his dental qualifications at Griffith University in Queensland, receiving numerous academic excellence awards. Humza received a scholarship for his Doctor of Clinical Dentistry (Endodontics) achieved in 2017 at the University of Otago, New Zealand. He graduated with membership in Specialist Dental Practice with the Royal Australasian College of Dental Surgeons and has been a clinical supervisor and examiner of undergraduate dental students. He currently works in private practice in Sydney.

CONTACT

T: 1300 302 421
E: events@henryschein.com.au

Register online at
henryschein.com.au/education



Supported by

